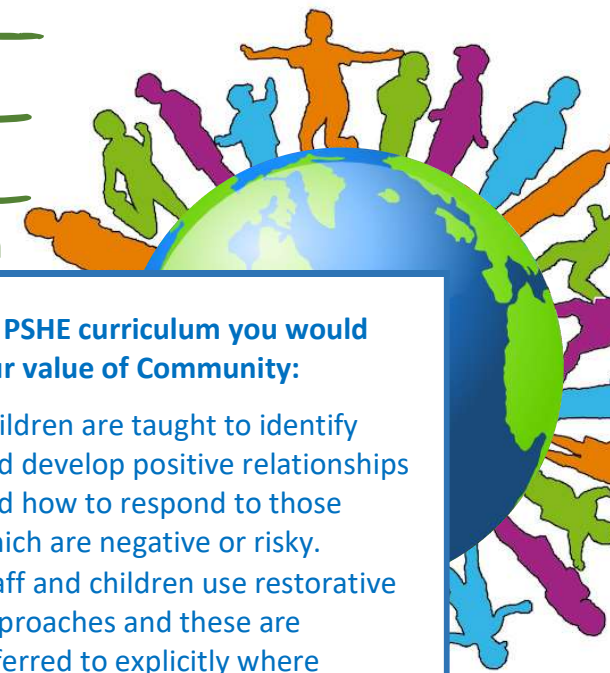




# PSHE

Personal Social Health Education



In our PSHE curriculum you would see our value of Compassion:

- Teachers promote a love of learning.
- Children are taught different ways of expressing love and know there are different types of love.
- Embedding of the notion that “Everyone is equal” from all staff.
- Children learn to be open and respectful, showing sensitivity as they form positive relationships.
- Children know what makes them unique.

In our PSHE curriculum you would see our value of Hope:

- Children are taught to voice feelings and worries in a way they are most comfortable with, e.g. in front of the class during lessons or through worry box/monster.
- In an age appropriate manner, children are taught and develop the skills to keep themselves safe in different situations.
- Opportunities are provided for children to collaborate together and develop discussions.

In our PSHE curriculum you would see our value of Community:

- Children are taught to identify and develop positive relationships and how to respond to those which are negative or risky.
- Staff and children use restorative approaches and these are referred to explicitly where appropriate.
- Teaching is adaptive to the interests, concerns, needs and wants of the children.

Children at Hawkhurst Church of England Primary School say this about PSHE:

*“I love learning about how to be kind to each other.” Year 3*

*“I like learning about different relationships and cultures.” Year 5*

*“We learn how to resolve problems.” Year 6*

*“It helps me with life.” Year 4*

*“I like the stories.” EYFS*





# PSHE

Personal Social Health Education



## Our Agreed consistencies for PSHE are:

- Worry box / Place 2Be box
- All children are encouraged to participate in discussions and share their views.
- Links are made with Collective Worship themes.

## If you were to walk into a PSHE lesson at Hawkhurst you would see:

- Progressive vocabulary related to the subject taught.
- Children articulating their viewpoints and opinions in a supportive learning environment.
- Continual reference to the school's values and links with real life to help children make connections with their learning.
- Quality First Teaching and scaffolding tailored to those requiring additional support and challenge.
- Questioning which promotes reflection and evaluation.
- All children being encouraged to experience the fullness of life and appreciate the awe and wonder in the theme or topic being explored.
- Children who are respectful; who listen to others and considerate to others working as a whole class or small group.

## In our PSHE curriculum you will see that we value inclusion and diversity:

- Opportunities for children to collaborate together and develop discussions.
- All children regardless of views and ability are encouraged to take part in discussions and share their thoughts and ideas.

## British Values and Spiritual, Moral, Social and Cultural Learning (SMSC) in PSHE:

**Spiritual** – Through high quality interactions and discussions within lessons links are made to their morals and values. Teachers help children to be able to reflect upon important concepts, experiences and beliefs through lessons, assemblies and visitors.

**Moral** – Through teaching and learning, children learn about different cultures and how these can assist them to understand and develop their own beliefs, values and morals thus being able to accept and embrace differences.

**Social (inc British Values)** – Children are taught and encouraged to appreciate each another's viewpoints, similarities and differences. This supports the British Values of respect and tolerance. Children are prepared with life skills to use in the present and the future. These values are interwoven throughout the curriculum.

**Cultural** – Diversity is celebrated through exploring other cultures.

